



Corporate Presentation | Spring 2023

Disclaimer & Forward Looking Statements



THIS PRESENTATION (THE "PRESENTATION") WAS PREPARED AS A SUMMARY OVERVIEW ONLY OF THE CURRENT AFFAIRS OF LIVE ENERGY MINERALS ("LIVE" OR THE "COMPANY") AND WAS NOT PREPARED FOR THE PURPOSE OF ASSISTING PROSPECTIVE INVESTORS IN MAKING A DECISION TO INVEST IN LIVE. LIVE ENERGY METALS DOES NOT MAKE ANY REPRESENTATION AS TO THE COMPLETENESS, TRUTH OR ACCURACY OF THE INFORMATION CONTAINED IN THIS PRESENTATION. THE COMPANY EXPRESSLY WARNS READERS NOT TO RELY ON THE INFORMATION HEREIN FOR INVESTMENT OR OTHER RELATED PURPOSES. ACCORDINGLY, ANY USE OF THIS INFORMATION IS AT YOUR RISK AND WITHOUT LIABILITY TO THE COMPANY. THE INFORMATION CONTAINED HEREIN IS NOT AND SHOULD NOT BE CONSTRUED AS EITHER A PUBLIC OR PRIVATE OFFER OR SOLICITATION TO PURCHASE SECURITIES IN THE CAPITAL STOCK OF LIVE ENERGY MINERALS. THE READER IS REFERRED TO HIS/HER PROFESSIONAL INVESTMENT ADVISOR REGARDING INVESTMENT RELATED DECISIONS RESPECTING THE SECURITIES OF THE COMPANY.

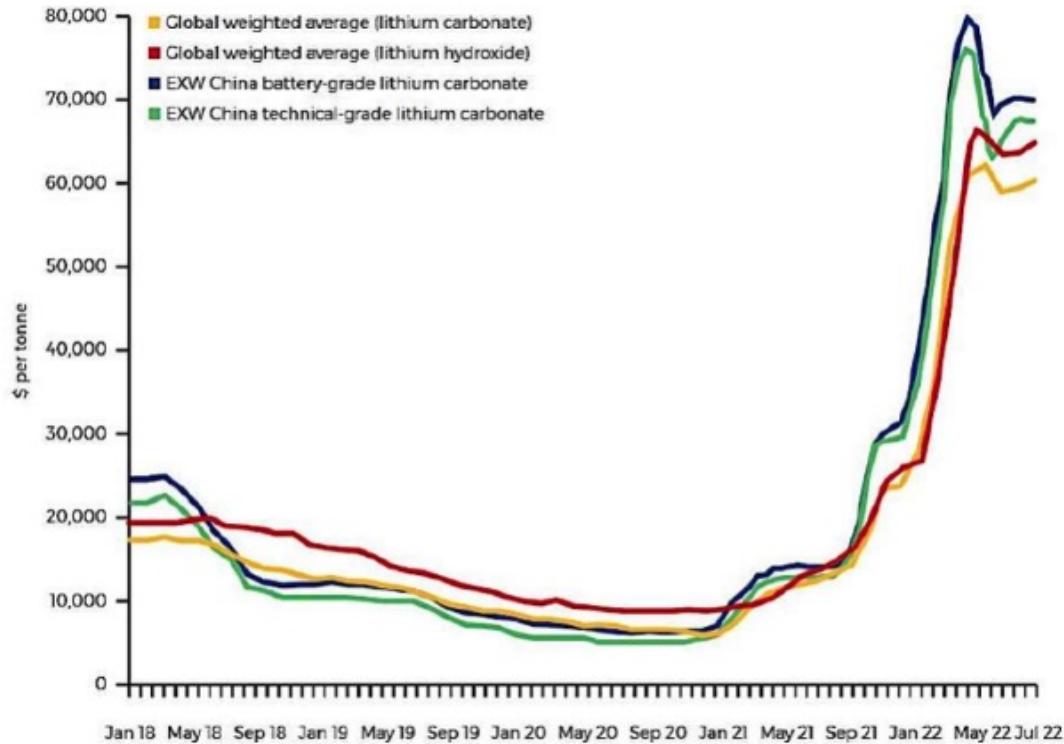
CONFIDENTIALITY This Presentation is confidential, and the contents are not to be reproduced or distributed to the public or the press. Securities legislation in all provinces and territories prohibits such unauthorized distribution of information. Each recipient of the information contained in this Presentation will treat such information in a confidential manner and will not, directly or indirectly, disclose or permit its affiliates or representatives to disclose such information to any other person or reproduce this Presentation in whole or in part, without the prior written consent of Live Energy Minerals.

FORWARD-LOOKING INFORMATION This presentation contains "forward-looking statements" within the meaning of applicable Canadian securities regulations. All statements other than statements of historical fact herein, including, without limitation, statements regarding exploration plans and other future plans and objectives, are forward-looking statements that involve various risks and uncertainties. There can be no assurance that such statements will prove to be accurate and future events and actual results could differ materially from those anticipated in such statements. Important factors that could cause actual results to differ materially from our expectations as well as a comprehensive list of risk factors are disclosed in the Company's documents filed from time to time via SEDAR with the Canadian regulatory agencies to whose policies we are bound. Forward-looking statements are based on the estimates and opinions of management on the date the statements are made, and we do not undertake any obligation to update forward-looking statements should conditions or our estimates change, other than as required by law and readers are further advised not to place undue reliance on forward-looking statements. Although the Company has attempted to identify important factors that could cause actual results to differ materially from those contained in forward-looking statements, there may be other factors that cause results not to be as anticipated, estimated or intended. There can be no assurance that such statements will prove to be accurate, as actual results and future events could differ materially from those anticipated in such statements. Accordingly, readers should not place undue reliance on forward-looking statements. The Company does not undertake to update any forward-looking statements that are contained herein, except in accordance with applicable securities laws.

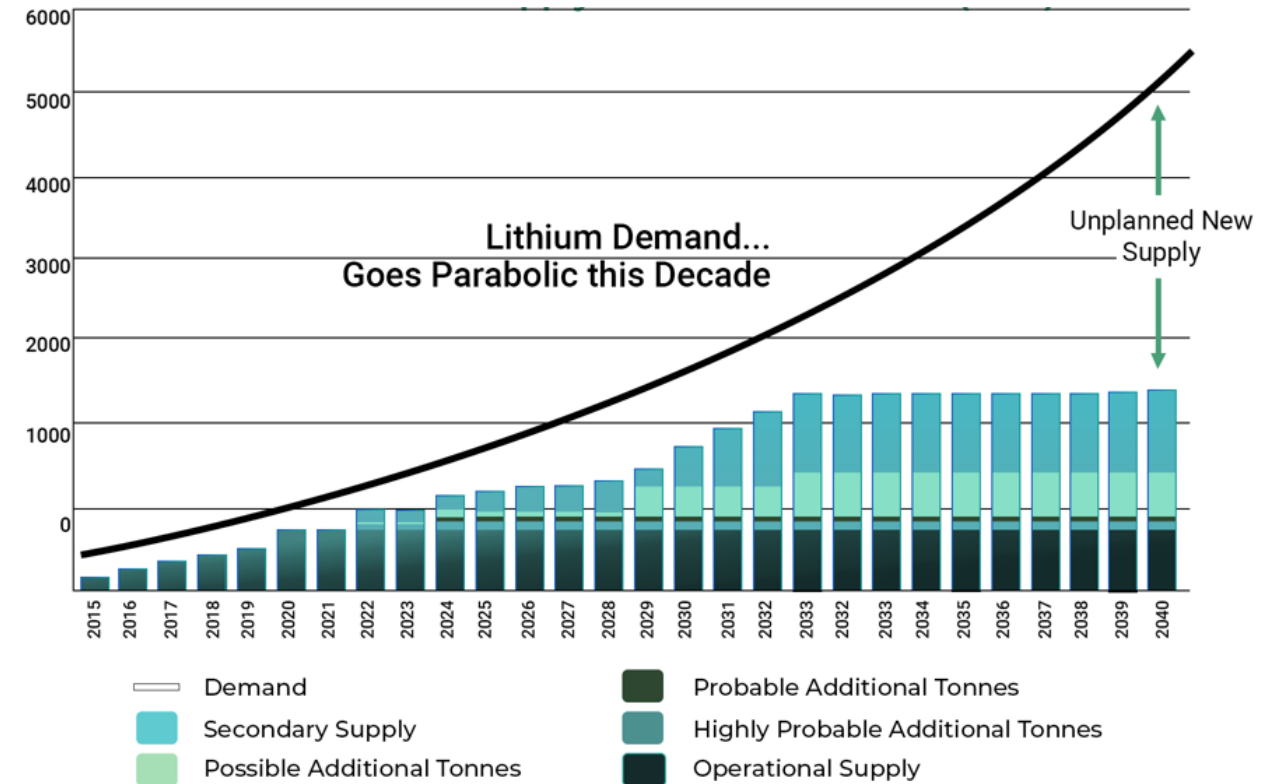
QUALITY ASSURANCE/QUALITY CONTROL The technical information in this presentation has been prepared in accordance with Canadian regulatory requirements as set out in National Instrument 43-101, and reviewed by the Company's qualified person, Adrian Smith, P. Geo.

Why Lithium?

Lithium prices remain near record highs



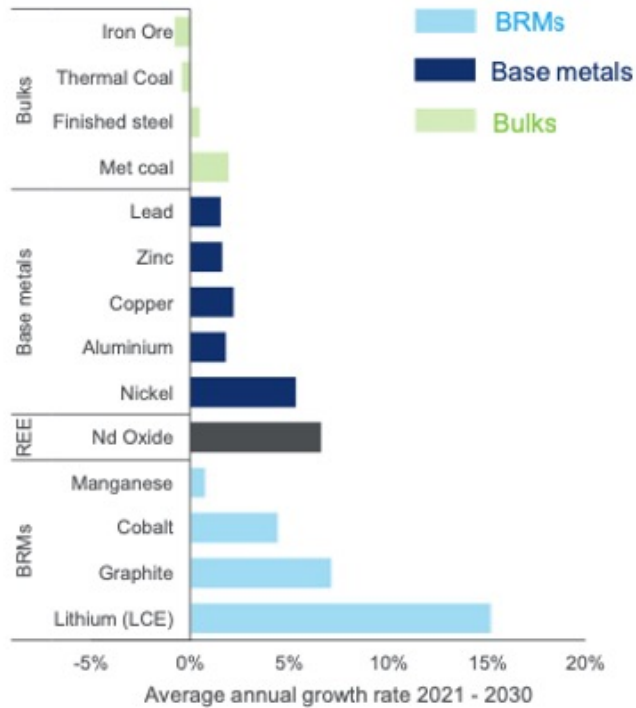
Lithium Chemical Supply & Demand in Tonnes ('000)



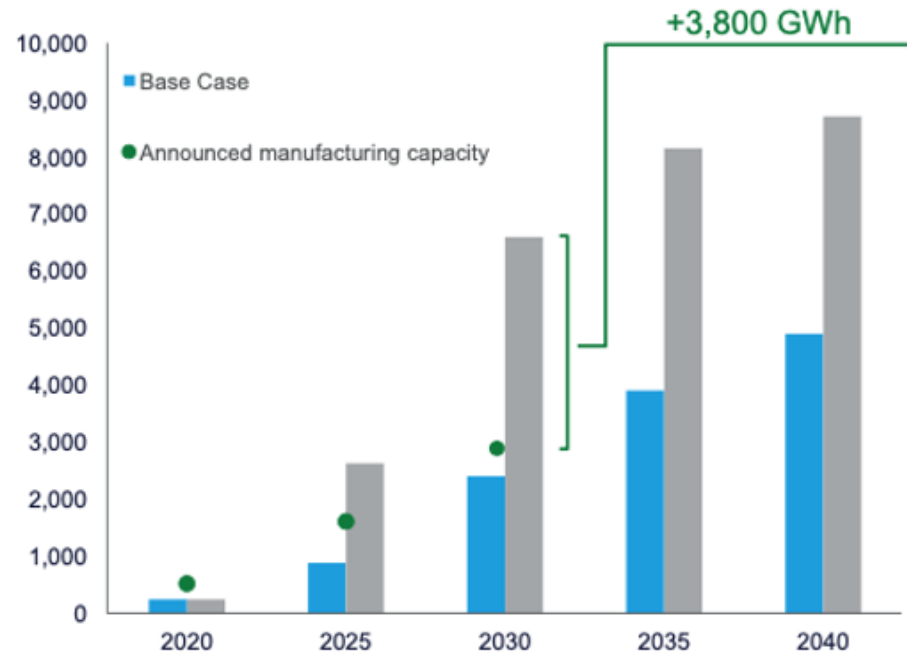
Source: Benchmark Mineral Intelligence

Why Lithium?

Market growth rate comparison



Lithium-ion battery demand (GWh)



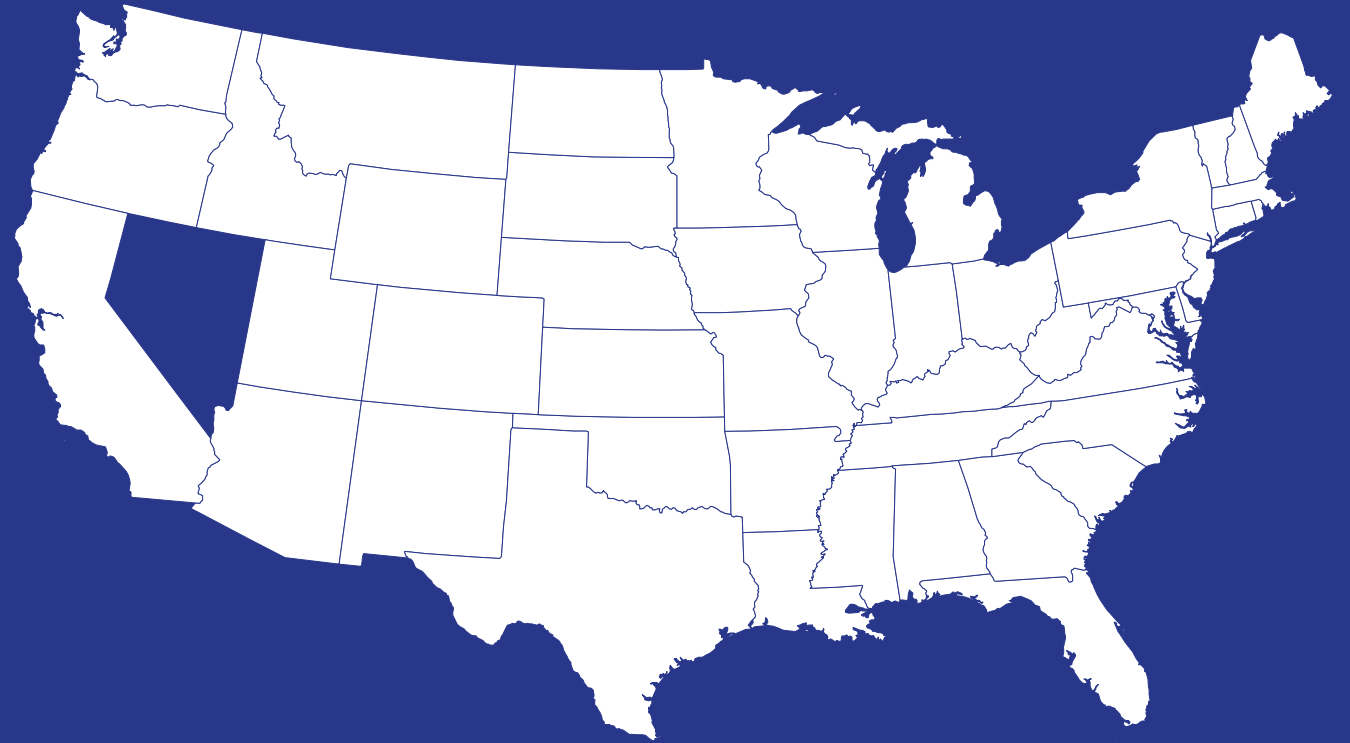
- The looming global lithium supply shortage has arrived, **with EVs as the key driver of global demand.**
- Every 1% increase of EVs in the global passenger market share adds **50-70,000t of LCE demand (~30% of current lithium market).**
- Hybrid (xEV) sales are expected to exceed ICE sales by **2028.**

Sources: Wood Mackenzie (2022), Benchmark Mineral Intelligence (2020)

Nevada – Riding the Wave of American Lithium



- With lithium skyrocketing to be one of the most sought-after commodities in the world today, the demand for a stable, high-grade supply **has never been higher.**
- In reference to global yearly supply: US mines produce only **1.8% annually, while holding 4.6% of the world's lithium reserves.**
- As it stands currently, Nevada is the only source of Lithium supply in the USA. Offering an incredible jurisdiction that is **mining-friendly, stable and provides robust access to infrastructure.**



The Changing Tide of USA-Sourced Lithium

Lithium is designated as a critical metal, with more US domestic deposits needing Presidential order.

February 24th, 2021

US Energy Department issues a conditional commitment for up to \$700M for Loneer Ltd.'s Rhyolite Ridge Lithium-Boron Project.

January 13th, 2023

GM's \$650M equity investment in Lithium Americas Thacker Pass project, Nevada has now been elevated to the world stage, with focus now on the McDermitt Caldera.

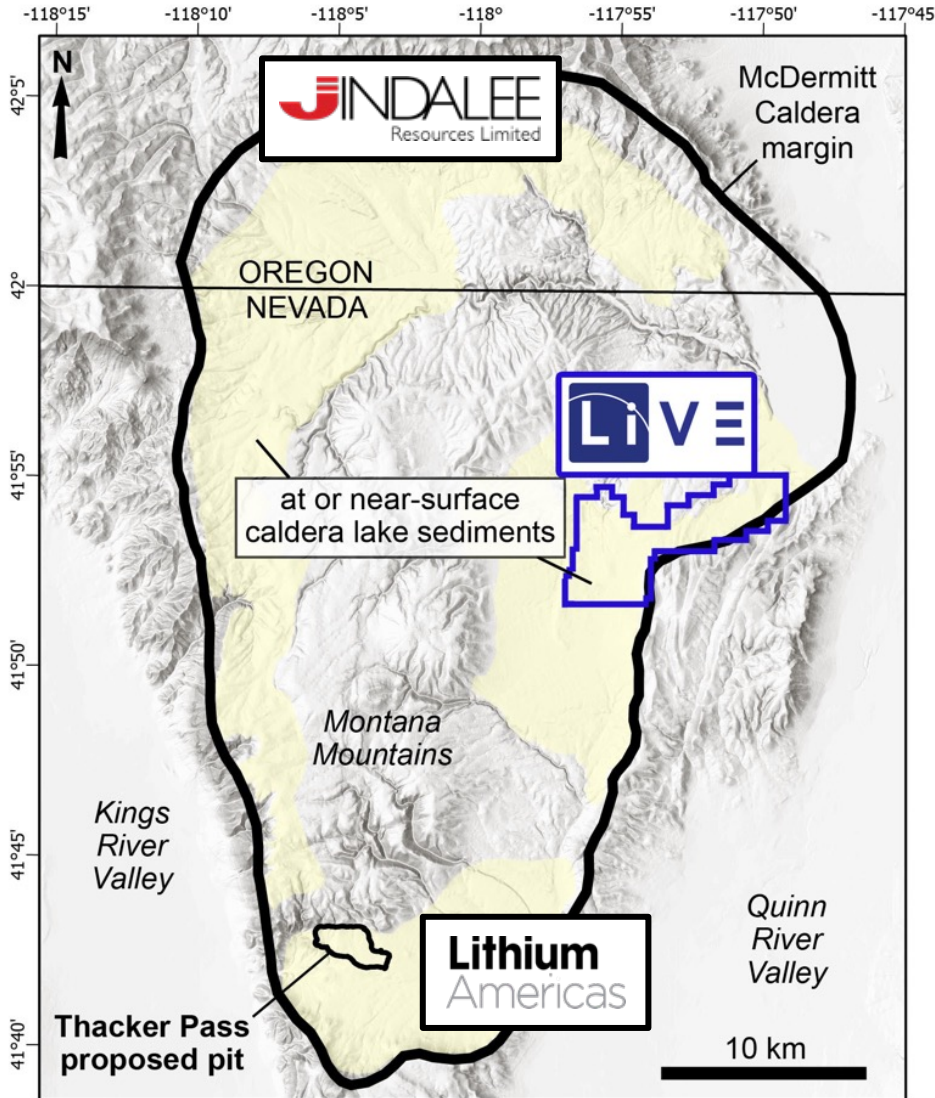
January 31st, 2023

About the McDermitt Caldera



- The McDermitt Lithium East project is comprised of 350 lode claims totaling approximately **2550 hectares (6,300 acres)** located within the McDermitt Caldera in northwest Nevada.
- The claims are **100% owned** by Lithium Valley Holdings Corp, a wholly owned subsidiary of Live Energy Minerals Corp.
- The project is located 13km southwest of the town of McDermitt Nevada and is accessible by **paved and graded dirt road 33km from the town of McDermitt, Nevada.**
- The McDermitt caldera is host to tuffaceous sediments, all intracaldera sediments have been assigned equally high potential for **elevated lithium mineralization by the US Government Mineral Resource Assessment.**
- Although McDermitt is still in the early stages of development and remains undrilled to date, recently acquired lithium grab samples of **up to 1907 ppm** point towards the highly prospective nature of this developing project, **with nearby comparables deemed “economic” at 300 ppm.**

Neighbour Overview



Modified from Lithium Americas (www.lithiumamericas.com/usa/thacker-pass)

Jindalee Resources (ASX: JRL)

- Combined Indicated and Inferred Mineral Resource Inventory of 3.0Bt at 1,340 ppm Li
- 1,000 ppm cut-off grade

Live Energy Minerals (CSE: LIVE)

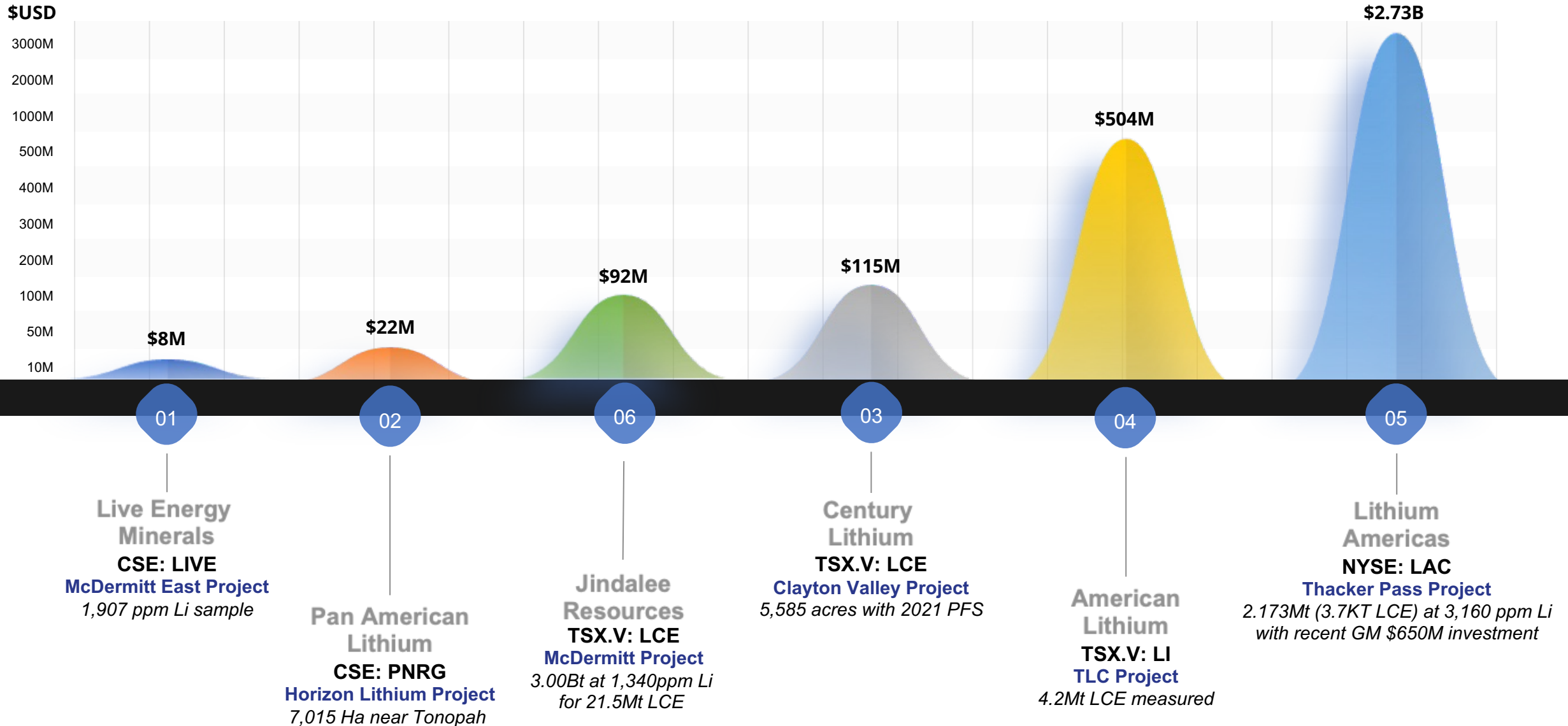
- Project located in the potentially largest source of lithium clays in the world, the McDermitt Caldera
- 6000+ acres covering the same lithium sediments as Jindalee & Lithium Americas

Lithium Americas (TSX: LAC)

- Proven & Probable 2.173Mt (3.7KT LCE) at 3,160 ppm Li
- Targeting 80,000 tonnes per annum with construction commenced as of March 2nd, 2023

- To the North: Jindalee resources lithium assets **total 21.5Mt LCE.**
- To the South: Lithium Americas Thacker Pass Project, recently highlighted with **GM's \$650M equity investment.**
- Other comparables within Nevada deem economic grades starting at 300 ppm – **with higher values considered very prospective in nature.**
- Live's McDermitt Lithium East Property features similar geology to Thacker Pass & Jindalee, with initial sampling returning results of **1907 ppm Li.**

Market Capitalization Comparables in Nevada

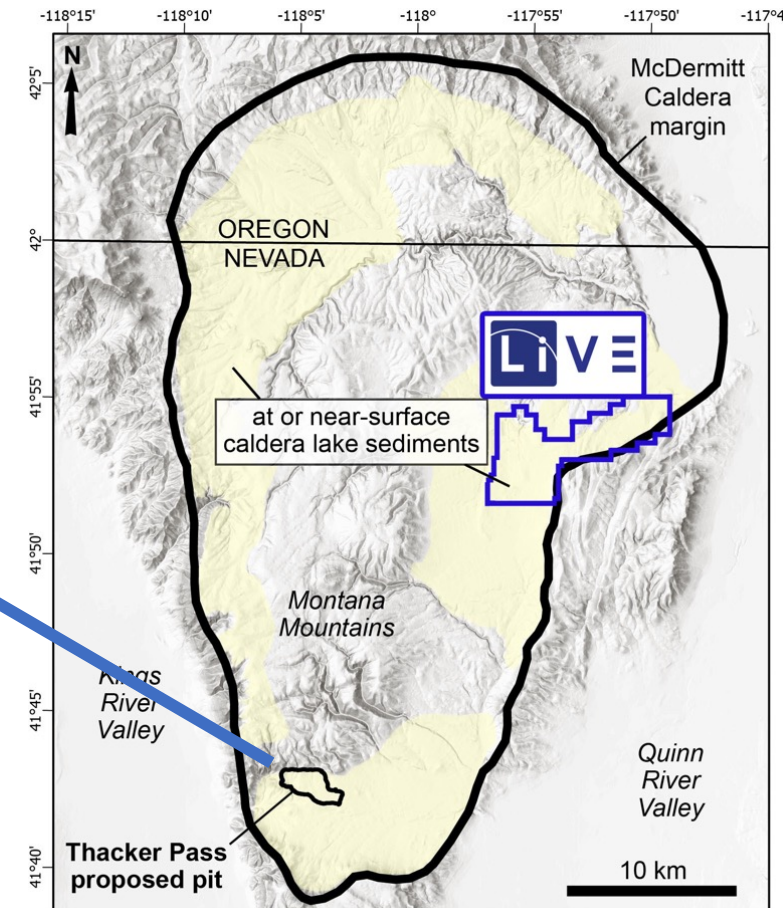
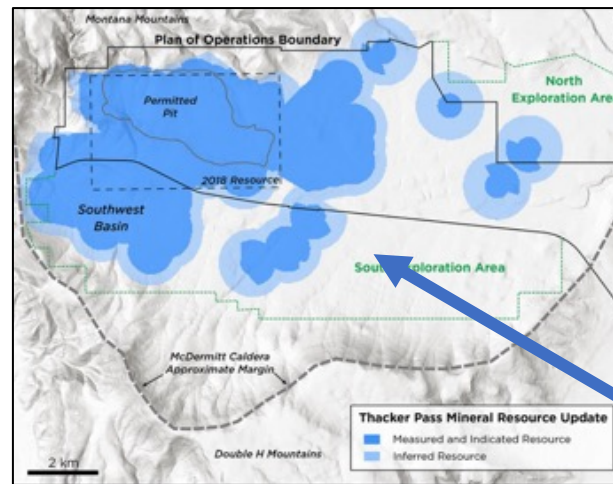


Lithium Americas – Thacker Pass Project



- Thacker Pass has the highest known grade of lithium enriched sediments than anywhere else in the USA, and **possibly the world’s largest clay resource**.
- Continued exploration in the Thacker Pass project area has demonstrated that lithium mineralization within the pit area **occurs at the same grades and depths elsewhere in the basin**.
- Through Live’s recent sampling, it appears that the same concentrations of lithium appear to the right of the basin with at or near-surface caldera lake sediments present.

Each new area of expansion at Thacker Pass continues to add to the projects overall resource.



Modified from Lithium Americas (www.lithiumamericas.com/usa/thacker-pass)

 **Enriched lithium bearing sediments**

Current Mineral Reserve Estimate – November 2022

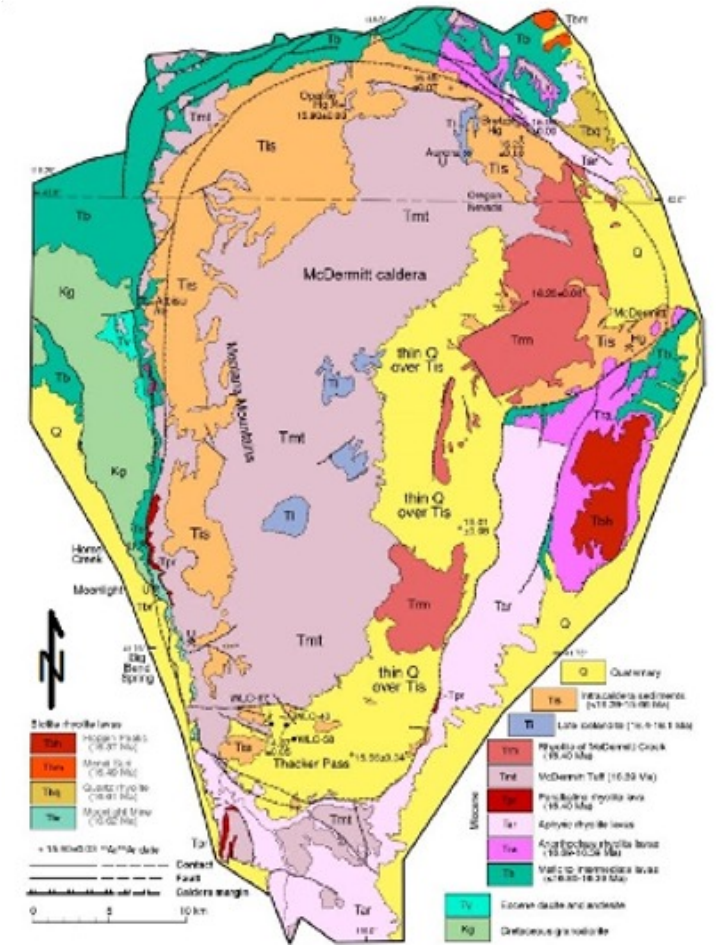
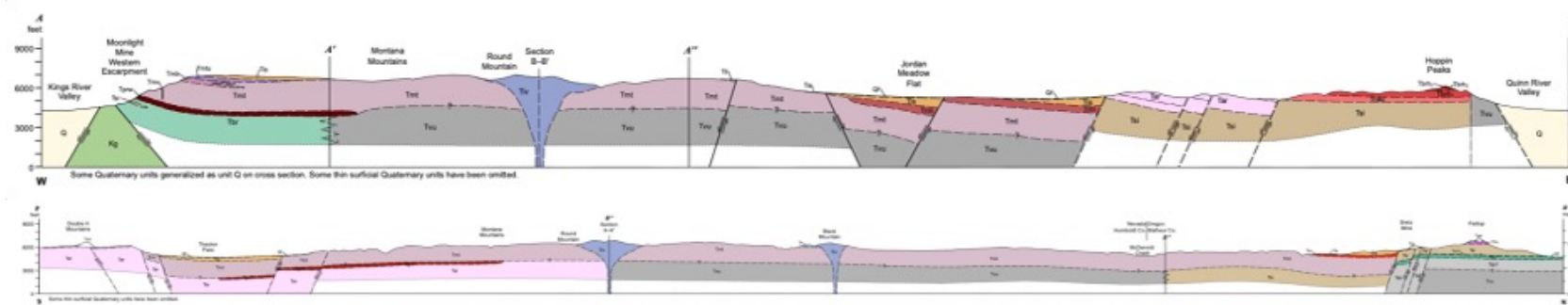
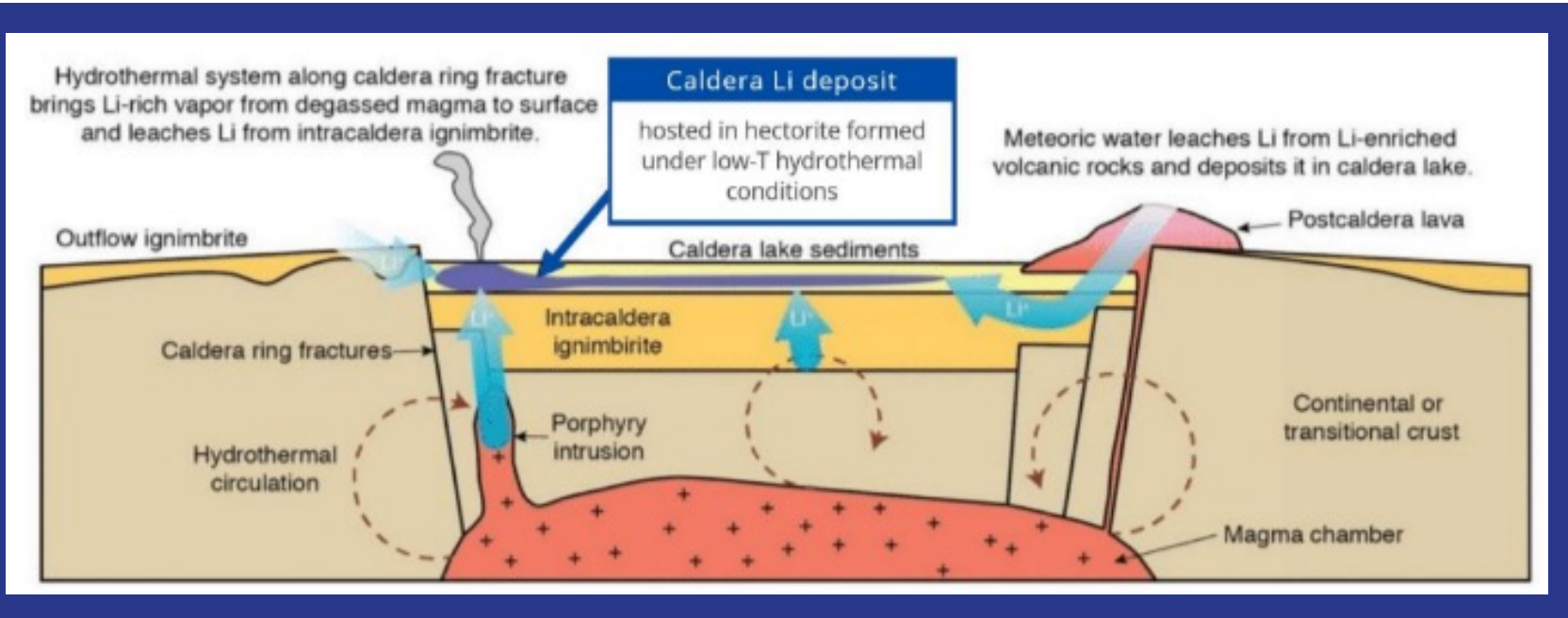
CATEGORY	TONNAGE (000 T)	AVG. LITHIUM (PPM)	LITHIUM CARBONATE EQUIVALENT (KT)
Proven	192.9	3,180	3.3
Probable	24.4	3,010	0.4
Total Proven and Probable	217.3	3,160	3.7

Sources: Lithium Americas (2023), Nevada Bureau of Mines and Geology & University of Nevada (2020)

Geologic History of the McDermitt Caldera



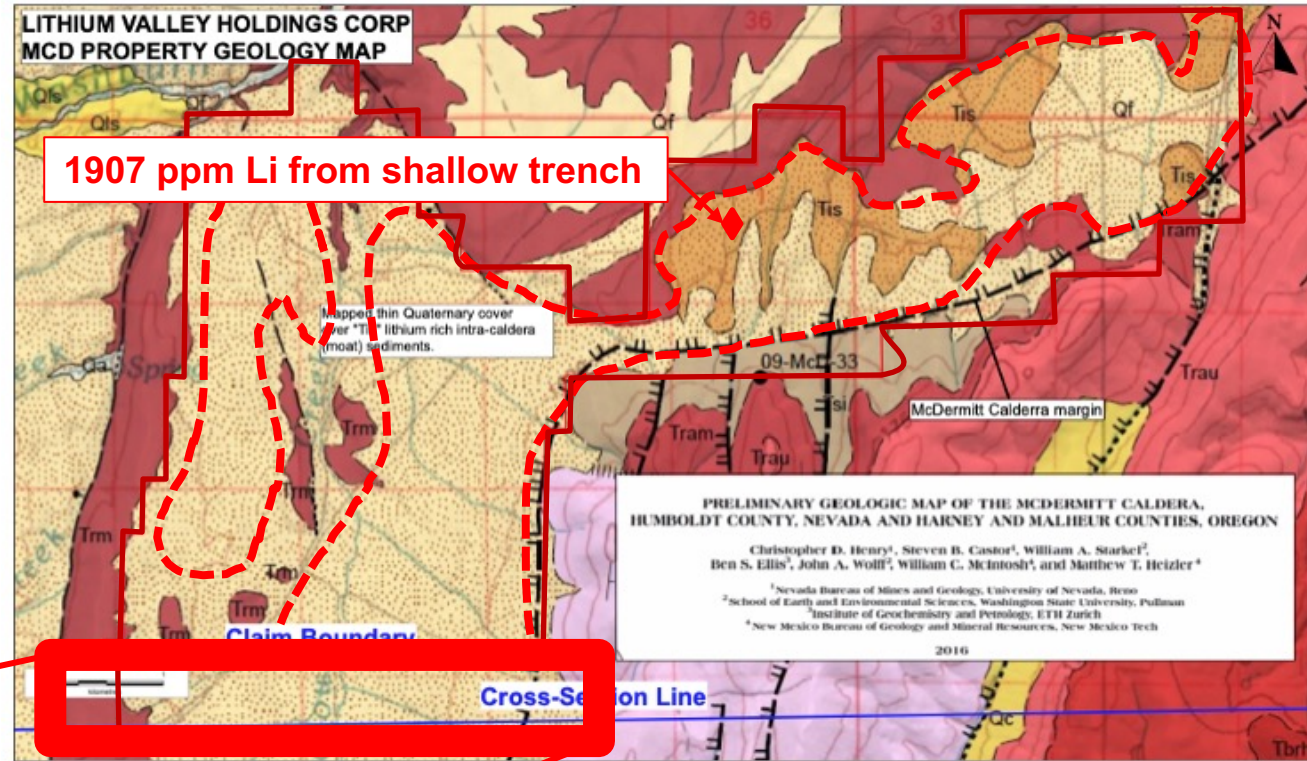
Exploration drilling at nearby lithium deposits, Thacker Pass and the McDermitt Lithium Project) confirms that the lithium mineralization is laterally extensive across the whole caldera.



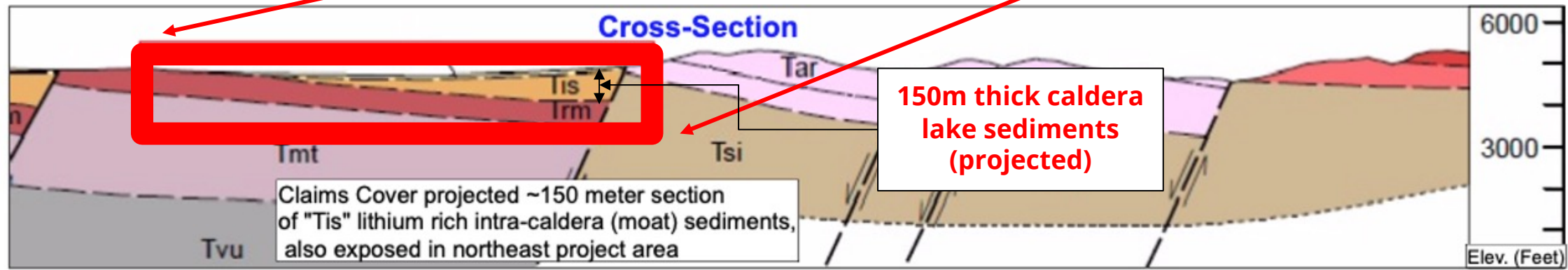
Geology of the McDermitt Caldera

Cross section of caldera show area on our claims has thicker sequence of lithium bearing sediments when compared to the LAC west properties

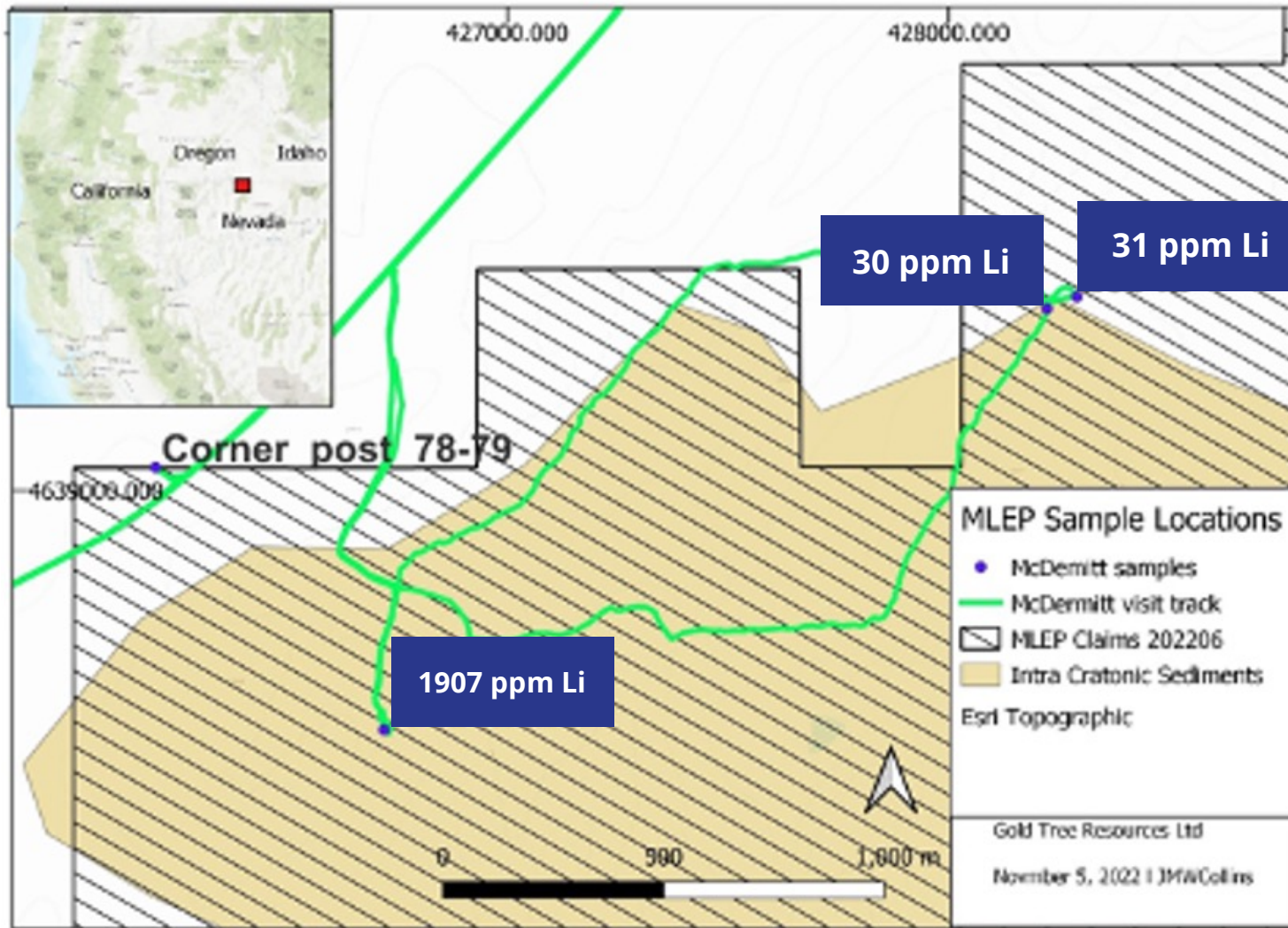
1907 ppm sample came from the EAST BLOCK from the TIS Sediments



- - - - Area up to 150m thick caldera lake sediments (projected)
- Claim outline



Preliminary Soil Sampling



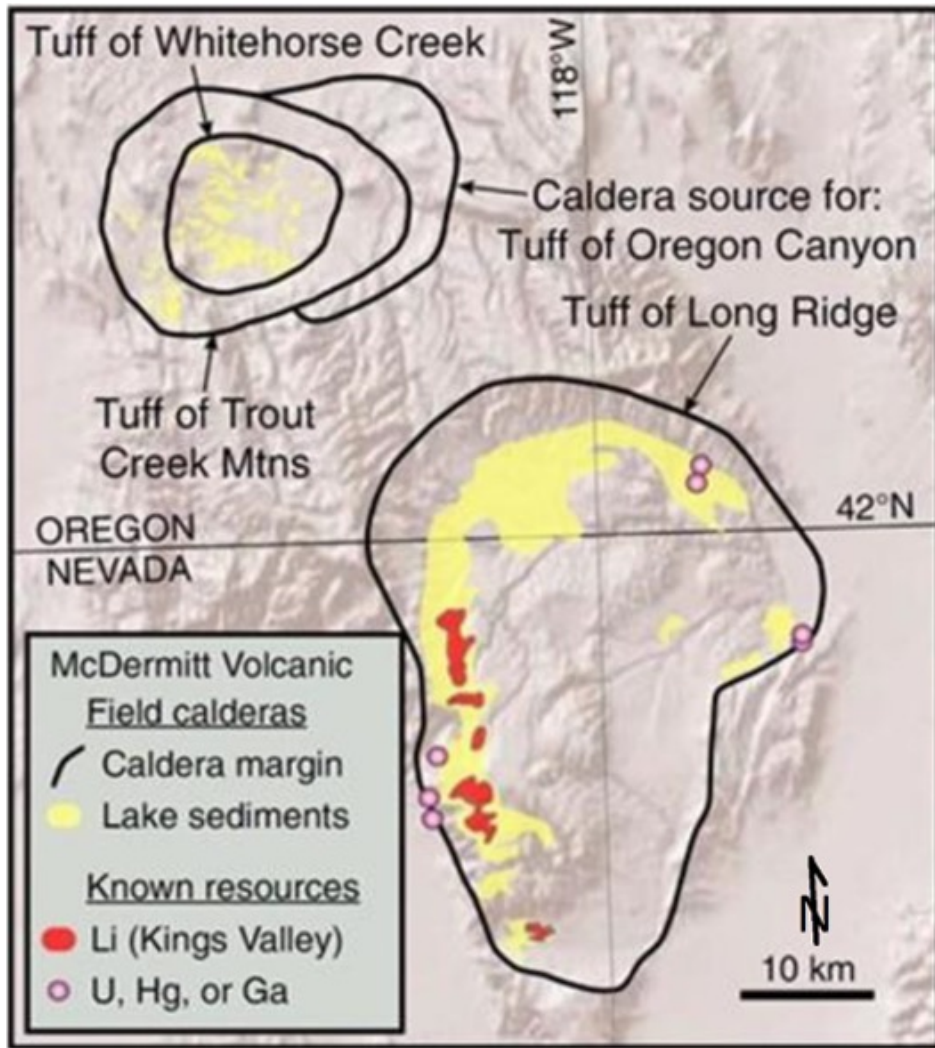
CEO Adrian Smith surface sampling at McDermitt Lithium East project, Nevada.

This was the first instance of lithium sampling on the East of Caldera.



Historic trenches from 1960s uranium exploration in the McDermitt Caldera, with location of 1907 ppm Li sampling.

43-101 Overview & Next Steps



- Exploration to date on the McDermitt Lithium East Property is early-stage and limited in nature, however the historic mapping of the caldera and the results of the samples taken during the site visit (including up to 1907 ppm Li) **suggest that there is potential for enriched lithium clay stone mineralization on the property.**
- Further work is warranted to better define the potential, as mapping and sampling has been very limited to date.
- Although the information is very preliminary, the results are encouraging and support the general geological model which indicates the potential for economic concentration of lithium.
- Effective exploration for lithium on this project will require the use of geophysics to define the thickness of aeolian and volcanic sediments that mask the intra-cratonic lower moat sediments as well as auger or trench sampling to get through the surficial leached zone.

Next Steps

- Mapping and further sediment/rock sampling
- Ground Penetrating (GRP) Survey
- Survey follow up with limited auger / hand pit dug sampling
- Wide spaced 1,000m drill program for definition of sediments / mineralization



Adrian Smith

P.Geo., B.Sc.
CEO & President

Mr. Smith has over a decades experience in the mining and exploration industry. Mr. Smith began working for Exploration Companies as an Underground Mine Geologist in the Shasta Gold-Silver Mine in Northern BC. He then began work for North American Tungsten Corp. at the Cantung Mine in the Northwest Territories where he was involved in successfully identifying, modeling, and producing ore in addition to known reserves. Since then Mr. Smith has taken his mining and exploration experience from underground and applied it to exploration projects across Canada and the United States. Mr. Smith graduated from Simon Fraser University with a Bachelor of Science degree specializing in Geology, and has been a member of APEG BC since 2008.



Kosta Tsoutsis

Director

Mr. Tsoutsis brings over 20 years of finance and capital market experience. Mr. Tsoutsis is currently CEO of M3 Metals Corp and formerly worked as an investment advisor at Mackie Research, Jordan Capital Markets, and Canaccord Capital Corp. Mr. Tsoutsis has significant experience specializing in developing, restructuring and financing venture capital companies. Mr. Tsoutsis has directly raised over CDN\$30 million in development and venture capital for public and private companies worldwide.



Brett Matich

Mechanical Engineer
Director

Mr. Matich has been in the mining industry over a 25-year period, has acted as CEO for listed Companies on the Australian, Toronto and London Stock Exchanges. He is currently a member of the American Society of Civil Engineers (ASCE) & the Australian Institute of Company Directors (AICD). Past successes include: as CEO of ASX-listed Aztec Resources Ltd (ASX: AZR) where he identified the potential and oversaw the development of the Koolan DSO hematite deposit, AZR rose from a A\$1 million market capitalization to a A\$300 million merger with ASX listed Mount Gibson Iron Ltd (ASX: MGX); as CEO of ASX-listed Fox Resources Ltd (ASX: FXR) he identified the potential and reactivated the Karratha nickel-copper mining operation within two short years; as CEO of TSXV-listed Cap-Ex Ventures Ltd he developed an un-drilled magnetite prospect into 8 Billion ton Compliant Resource and received Top 50 TSXV member in 2012.



James Henning

CPA
CFO

Mr. Henning is a Chartered Accountant and the founder and president of Corpfinance Advisors Inc. since 1984. Mr. Henning has solid expertise and practical experience in valuing businesses in a broad range of industries. He has assisted companies in financing, public offerings and restructuring. Areas of expertise include retail cannabis, manufacturing, telecommunications, software, biomedical, oil and gas services, and renewable energy industries. Mr. Henning has served as a Chief Financial Officer and director for a number of TSXV and CSE-listed companies over the past several years.



Leah Dionne

Corporate Secretary

Mrs. Dionne is the Managing Director of Corporate Advisory Services for Partum Advisory Services Corp., a leading Vancouver corporate administration and financial reporting firm. Mrs. Dionne has 15 years' collective experience working in leading Canadian law firms, and for publicly-traded companies. During her career, she has focused on securities and corporate finance and assists with managing public company listing requirements with a focus on the CSE, TSXV, NEO and TSX stock exchanges, as well as listings on the OTC Markets. Through Partum she helps clients navigate complex corporate compliance matters, financings and IPO preparations for the Canadian markets.



Gerald Kelly

Director

Mr. Kelly is presently a Licensed Exempt Market Dealer representative at Intrynsyc Capital Corp. and has been since October 2020. Mr. Kelly is also a Partner at Caymus Advisors Inc., a corporate development and advisory company from August 2019 to present. Mr. Kelly earned a Bachelor of Arts from UBC, as well as a diploma in Marketing Management from BCIT and was a Licensed Realtor at Sutton West Coast Realty from May 2000 to April 2020.

Live Energy Minerals Corp. (CSE: LIVE)

As of March 15th, 2023

Common Shares	17,020,501
Options	0
Warrants	5,200,000
Insider Control	(22%)
Fully Diluted	22,120,501
Market Capitalization	~ CAD \$11M / USD \$8M



Vancouver Head Office

Suite 810 - 789 West Pender Street,
Vancouver, BC V6C 1H2

T. 604-687-2038

F. 604-687-3141

E: info@live-energy-minerals.com